

## Did You Know 8 Facts About Covid Poster Series Sources of Reference

Poster Version February 2021

Fact	Source
	<p>“Always wearing a mask when going out was associated with a <b>70% reduction in risk</b> compared with never wearing a mask.”</p> <p>Wu, J., Xu, F., Zhou, W., Feikin, D. R., Lin, C. Y., He, X., Zhu, Z., Liang, W., Chin, D. P., &amp; Schuchat, A. (2004). Risk factors for SARS among persons without known contact with SARS patients, Beijing, China. <i>Emerging infectious diseases</i>, <i>10</i>(2), 210–216. <a href="https://doi.org/10.3201/eid1002.030730">https://doi.org/10.3201/eid1002.030730</a></p> <p>“Hypothetical mask adoption scenarios, for Washington and New York state, suggest that immediate near universal (80%) adoption of moderately (50%) <b>effective masks could prevent on the order of 17–45% of projected deaths</b> over two months in New York, while decreasing the peak daily death rate by 34–58%, absent other changes in epidemic dynamics.”</p> <p>Eikenberry, Steffen &amp; Mancuso, Marina &amp; Iboi, Enahoro &amp; Phan, Tin &amp; Eikenberry, Keenan &amp; Kuang, Yang &amp; Kostelich, Eric &amp; Gumel, Abba. (2020). To mask or not to mask: Modeling the potential for face mask use by the general public to curtail the COVID-19 pandemic. <i>Infectious Disease Modelling</i>, <i>5</i>, 293-308. <a href="http://doi.org/10.1016/j.idm.2020.04.001">http://doi.org/10.1016/j.idm.2020.04.001</a>.</p>
	<p>“Globally, 4.7 million new cases were reported in the past week, a decline of 6% from last week, and the number of new deaths has climbed to a record high at 93 000, a 9% increase from last week. <b>This brings the cumulative numbers to over 93 million reported cases and over 2 million deaths globally since the start of the pandemic.</b>”</p> <p>World Health Organization. (2021). COVID-19 Weekly Epidemiological Update – 19 January 2021. Available at: <a href="https://www.who.int/publications/m/item/weekly-epidemiological-update---19-january-2021">https://www.who.int/publications/m/item/weekly-epidemiological-update---19-january-2021</a></p>

## Fact

## Source



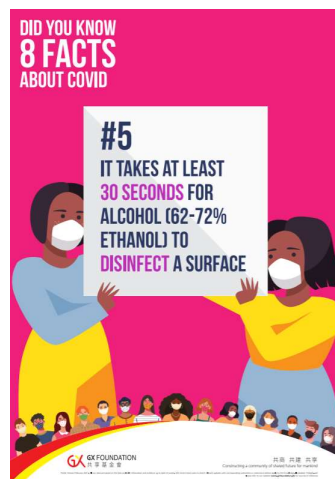
“In a study by the U.S. National Institutes of Health (NIH), researchers found that the virus that causes **COVID-19 can live up to four hours on copper, up to 24 hours on cardboard, and up to three days on stainless steel and plastic surfaces.**”

Marshall, W. (2020). Can COVID-19 (coronavirus) spread through food, water, surfaces and pets?. Retrieved 19 January 2021, from <https://www.mayoclinic.org/diseases-conditions/coronavirus/expert-answers/can-coronavirus-spread-food-water/faq-20485479>



“Among the 16 persons in whom SARS-CoV-2 infection was detected, **12 (75%) were passengers seated in business class along with the only symptomatic person (attack rate 62%).**”

Khanh, N. C., Thai, P. Q., Quach, H., Thi, N. H., Dinh, P. C., Duong, T. N., . . . Anh, D. D. (2020). Transmission of sars-cov 2 during long-haul flight. *Emerging Infectious Diseases*, 26(11), 2617-2624. <https://doi:10.3201/eid2611.203299>



“**Virus [...] was exposed to sanitizer for 30 seconds.** Thirty seconds was selected as an industry standard contact time that also meets recommendations of international hand hygiene guidelines. [...] **both test products reduced the SARS-CoV-2 virus below detectable limits.**”

Leslie, R. A., Zhou, S. S., & Macinga, D. R. (2021). Inactivation of SARS-CoV-2 by commercially available alcohol-based hand sanitizers. *American Journal of Infection Control*, 49(3), 401–402. <https://doi.org/10.1016/j.ajic.2020.08.020>

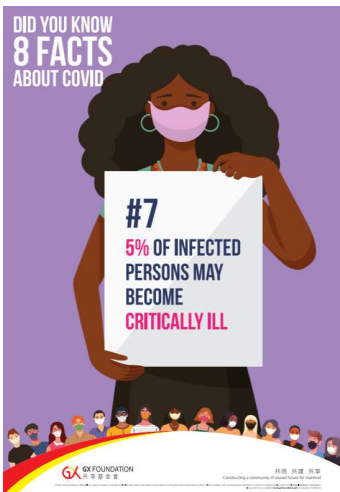
## Fact

## Source



“On the basis of the 3 cohorts with representative samples— Iceland and Indiana, with data gathered through random selection of participants, and Vo', with data for nearly all residents—the **asymptomatic infection rate may be as high as 40% to 45%.**”

Oran, D. P., & Topol, E. J. (2021). Prevalence of Asymptomatic SARS-CoV-2 Infection. *Annals of internal medicine*, 174(2), 286–287. <https://doi.org/10.7326/L20-1285>



“A large cohort that included more than 44,000 people with COVID-19 from China, showed that illness severity can range from mild to critical [...] **Critical (respiratory failure, shock, or multiorgan system dysfunction): 5%.**”

United States Centers for Disease Control and Prevention. (2020a, February 11). Interim Clinical Guidance for Management of Patients with Confirmed Coronavirus Disease (COVID-19). <https://www.cdc.gov/coronavirus/2019-ncov/hcp/clinical-guidance-management-patients.html>



“**The 90% [of patients] who had not recovered experienced symptoms for an average of 40 days.**”

Collins, F. (2020, September 3). Citizen Scientists Take on the Challenge of Long-Haul COVID-19. NIH Director’s Blog. <https://directorsblog.nih.gov/tag/body-politic-covid-19-support-group/>